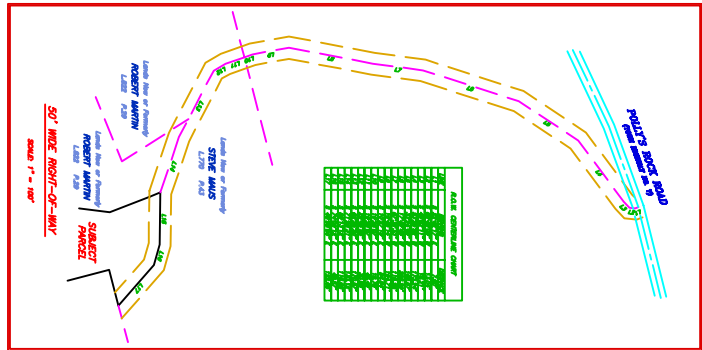
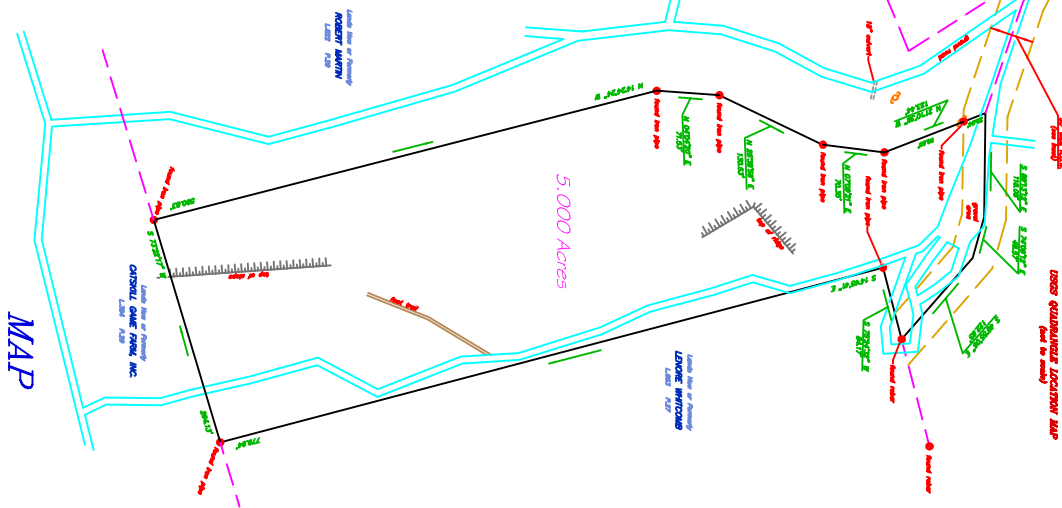
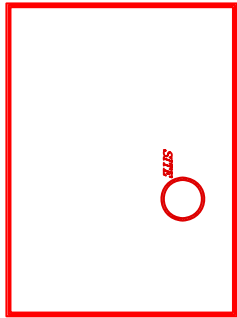


DATE: 1/14/07
 DRAWN BY: [Name]
 CHECKED BY: [Name]
 PROJECT NO: [Number]
 SHEET NO: [Number]

MAGNETIC NORTH
 FEBRUARY 2007



DATE	DESCRIPTION
1/14/07	Initial Survey
1/15/07	Field Notes
1/16/07	Map Drafting
1/17/07	Final Review
1/18/07	Map Completion



MAP

Richard J. Roth

OF SUMNER TOWNSHIP
 STATE IN
 TOWN OF CAIRO COUNTY OF GREENE
 STATE OF NEW YORK
 SCALE: 1 inch = 50 feet

MAP COMPLETED 2/13/2007
 DONALD L. GREENE, P.L.S.
 115 S. Rte. 285B
 P.O. Box 285B
 Kingston, N.Y. 12402
 (518) 338-1487

1/15/07-02-04
 THE RECORD